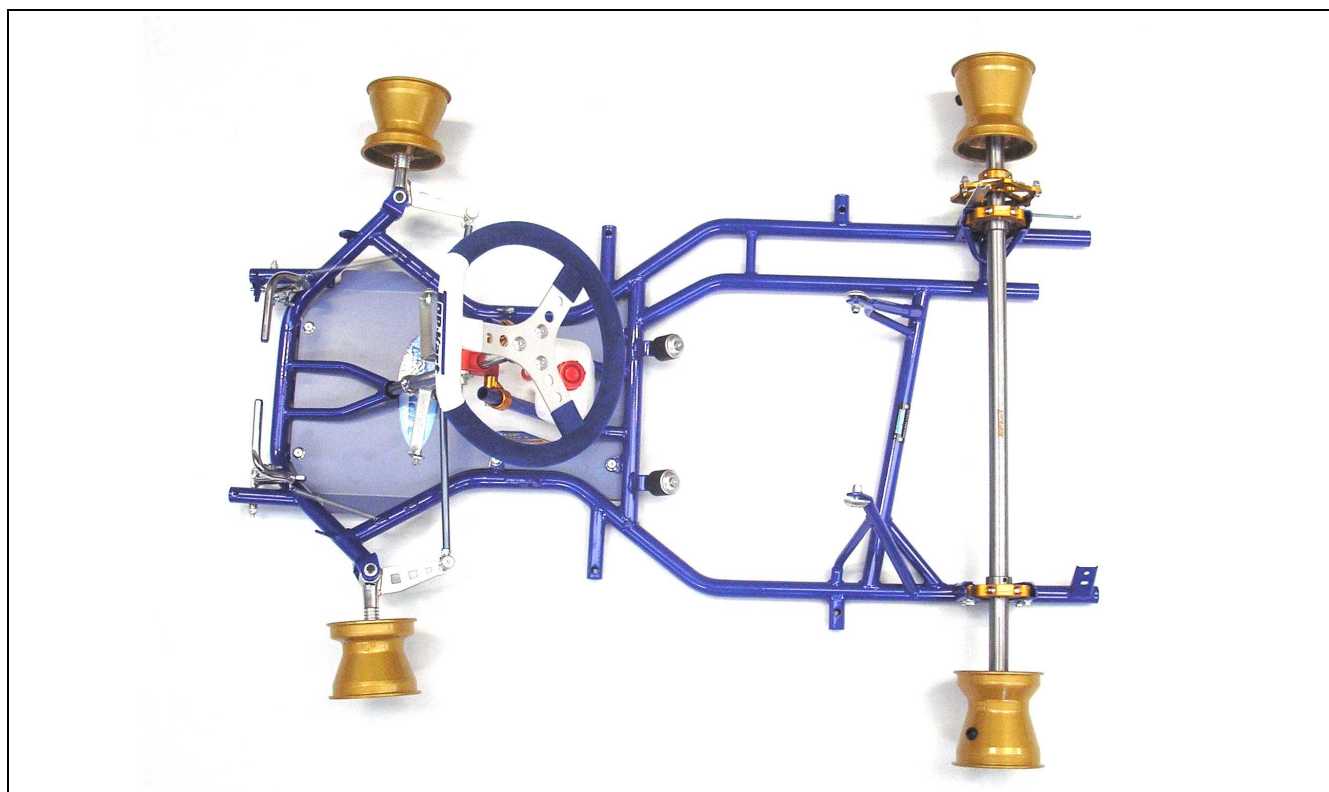


HOMOLOGATION OF CHASSIS

| | |
|-----------------|--------------------------------|
| Manufacturer | COMER S.p.A. |
| Make | TOP KART |
| Model | BLUE EAGLE |
| Category | Formula Super Cadet/Bambini |
| Valid as from | 1 st January 2011 |
| Valid until | 31 st December 2016 |
| Number of pages | 5 |

Any modification is forbidden, if it is not explicitly allowed by the Technical or Homologation Regulations and/or appended as an approved extension.



Photograph of the chassis less seat, brakes, tyres, bumpers and bodywork

SIGNATURE AND STAMP OF THE DMSB/MSA

| | |
|--|--|
| | <p>Date: 15 November 2010</p> <p>Signed by: Michael Günther / John Ryan</p> <p>Position: DMSB/MSA Technical Executive</p> |
|--|--|

TECHNICAL DRAWINGS OF FRAME WITH MAIN DIMENSIONS

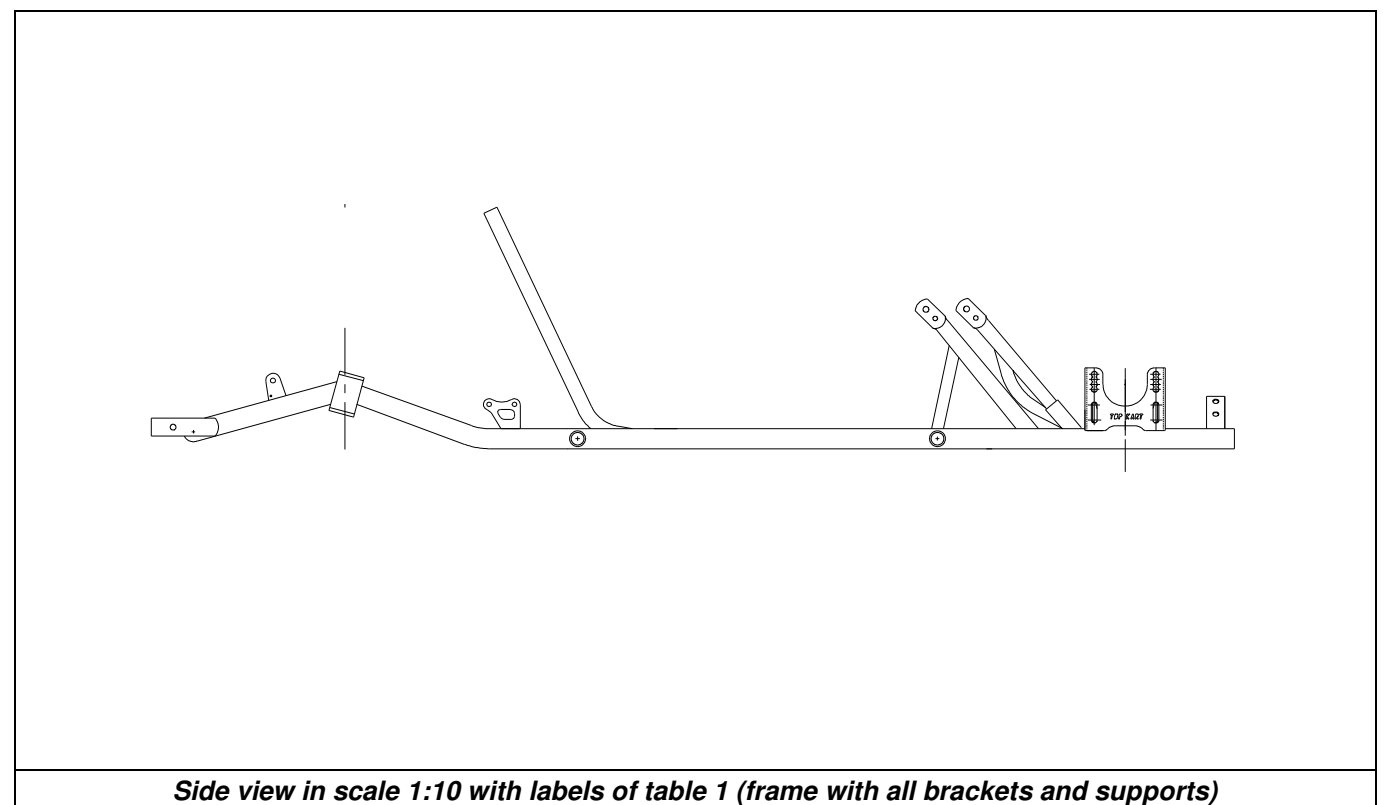
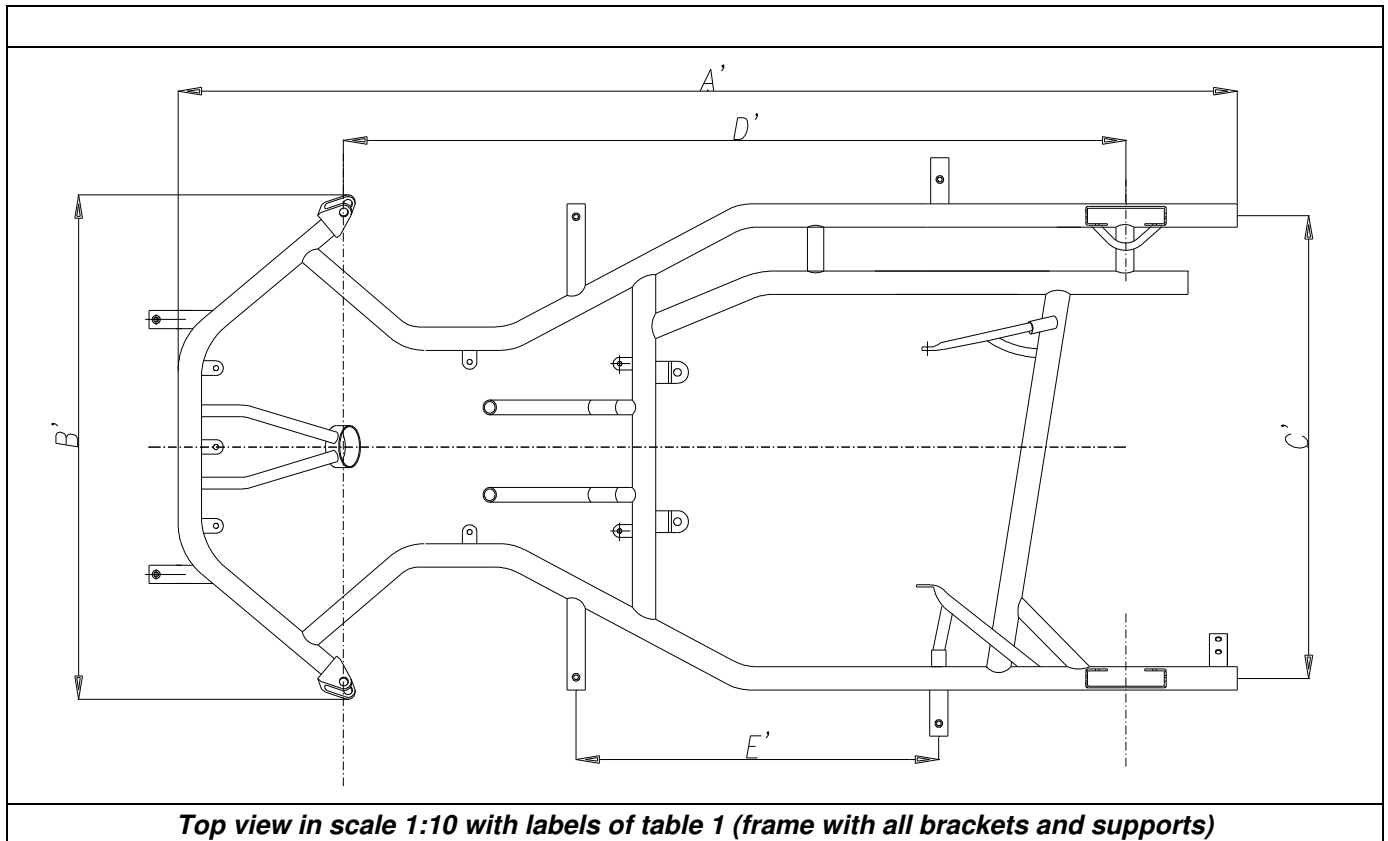


TABLE 1: DIMENSIONS OF FRAME AND REAR AXLE

| Label | | Measurement | Tolerance/Remarks |
|---|--|-----------------------|---|
| A': | Total length (w/o. front bumper) | 1318 mm | +/- 10 mm |
| B': | Width at front axle* | 630 mm | +/- 5 mm |
| C': | Width at rear axle | 582 mm | +/- 5 mm (centre to centre) mandatory: 600 +/- 25 mm acc. HR |
| D': | Wheelbase (mandatory) | 950 mm | +/- 5 mm |
| E': | Distance of supports for side bodywork | 380 mm | +/- 5 mm mandatory acc. drawing 18a of HR |
| * measured from the outermost point of the front axle | | | |
| Tube data | | | |
| | Number of bends | 8 + 1 | max. 8 |
| | Number of tubes | 6 | Mandatory |
| | Diameter | 28 mm | +/- 0.5 mm |
| | Wall thickness | 2.0 mm | +/- 0.1 mm |
| | Material | Magnetic steel | Mandatory |
| | Number of bearings | 2 | Mandatory |
| Rear axle data | | | |
| | Material | Magnetic steel | Mandatory |
| | Diameter | max. 30 mm | Mandatory |
| | Wall thickness | min. 4.9 mm | Mandatory |
| | Length | 960 mm | +/- 10 mm |
| | Weight | 2,900 g | +/- 100 g |

All pre-defined data including possible tolerances must be respected.

COMPLIMENTARY INFORMATION

Mounting sockets on lower front bumper are designed to accept fitment of CIK crash-tested and homologated 'Mini Kart' bodywork (see CIK Technical Regulations).
Note: Distance of this mounted sockets: 355mm (centre to centre).

STEERING COLUMN ADAPTION (mandatory)

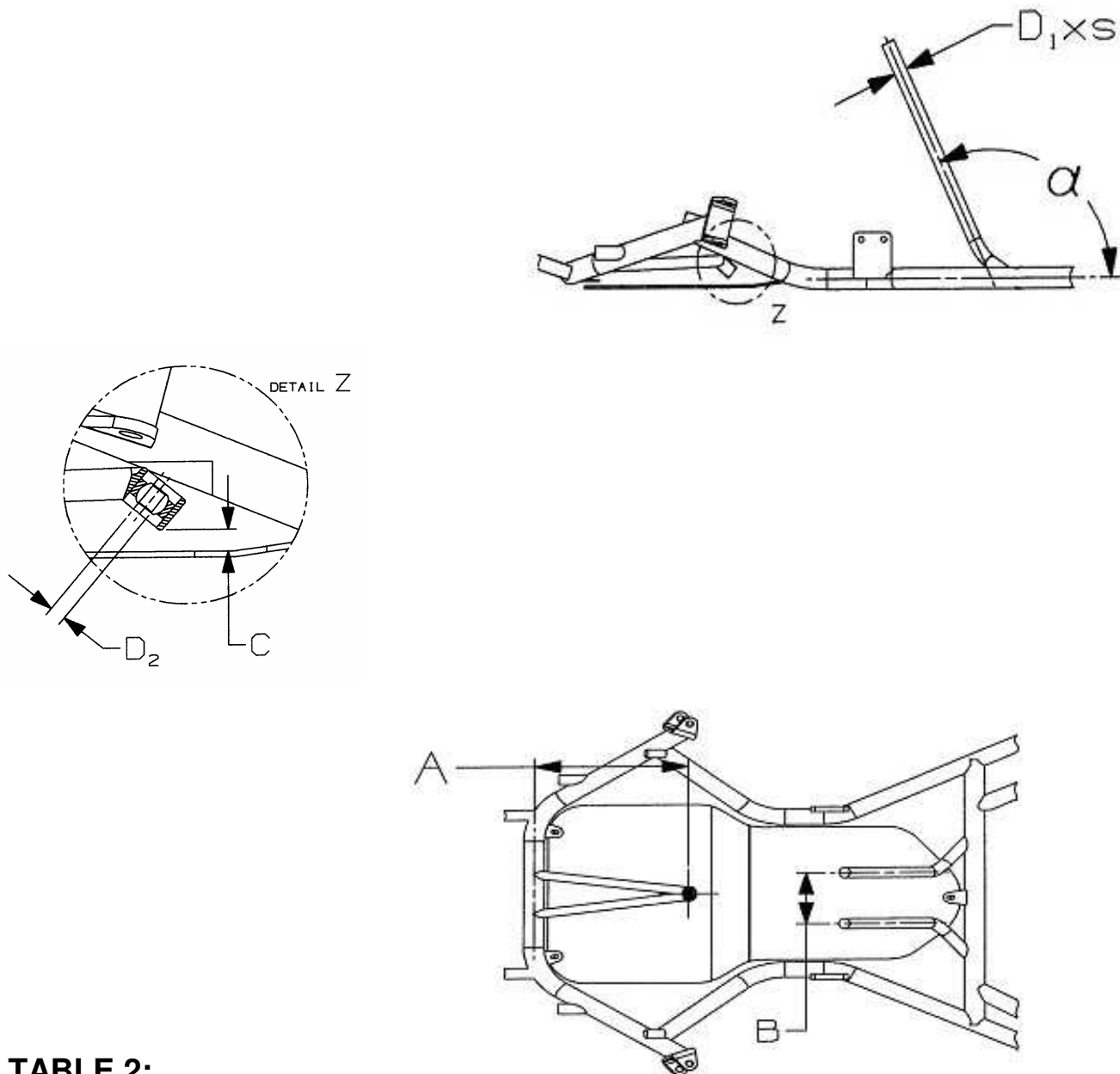


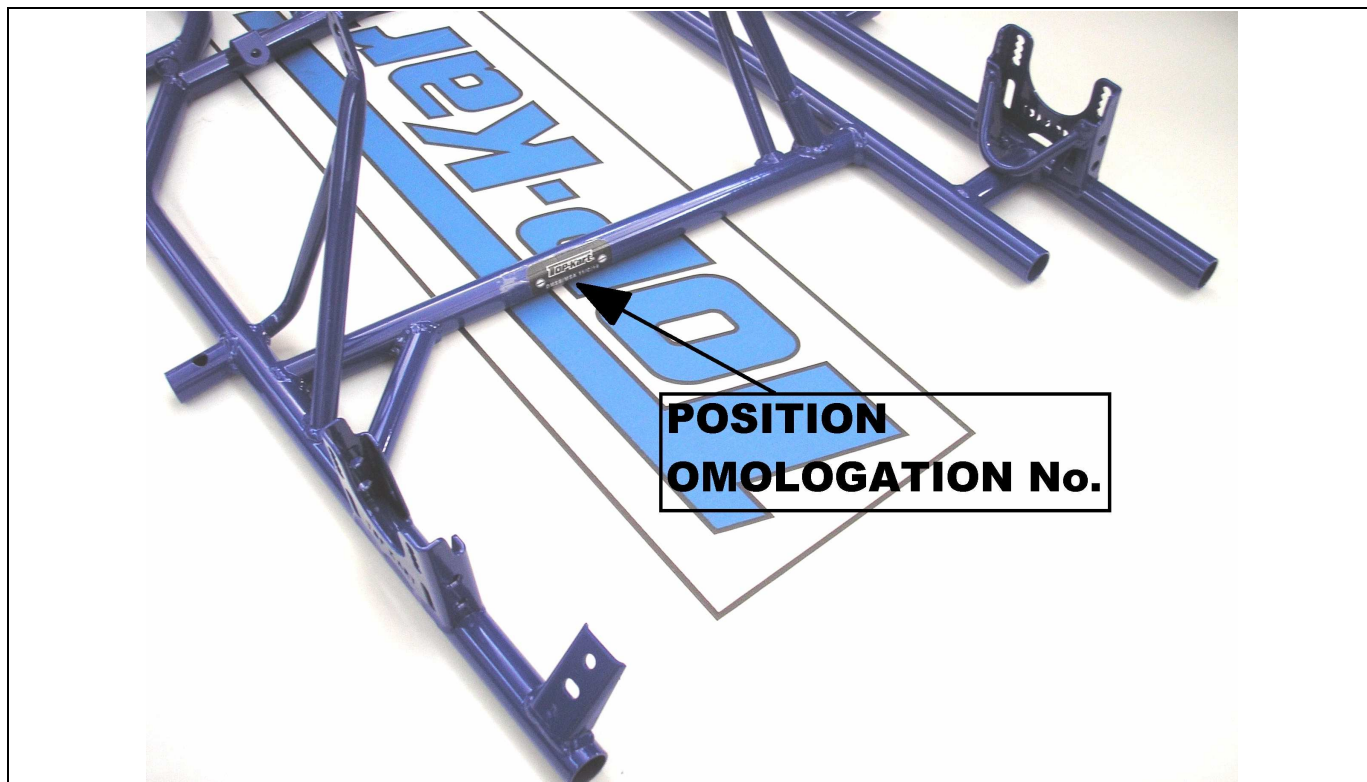
TABLE 2:

| | Dimension (real) | Mandatory dimensions | Tolerances/remarks |
|----------------|------------------------------|----------------------|---|
| α | 115° | 115° | $\pm 10^\circ$ |
| A | 180 mm | 180 – 240 mm | Design optional |
| B | 100 mm | 100 mm | ± 2 mm Distance of tank struts (parallel) |
| C | 14 mm | 15 mm | ± 5 mm Distance to the upper edge of the floor |
| $D_1 \times s$ | $\varnothing 20 \times 2$ mm | 20 x 2 mm | ± 0.5 mm Diameter and thickness of tank struts |
| D_2 | $\varnothing 10$ mm | 8 or 10 mm | ± 0.1 mm Diameter of column bearing pin (Uniball) |

HOMOLOGATION NUMBER MARKING



Photograph of Homologation Number marking



**POSITION
HOMOLOGATION No.**

Photograph / drawing of position of Homologation Number marking